



ZURFLÜH-FELLER

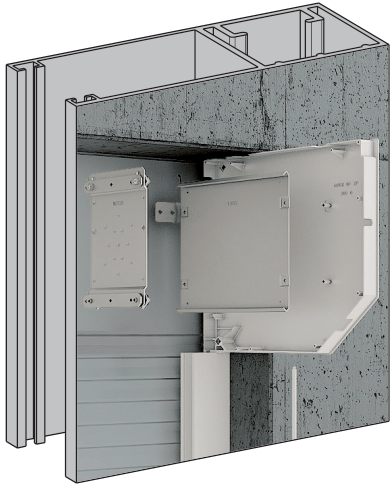
Garage doors and heavy-duty shutters

A wide range of specific accessories to meet every need

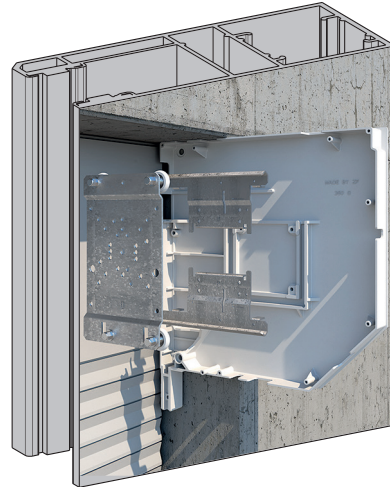


ZF garage doors

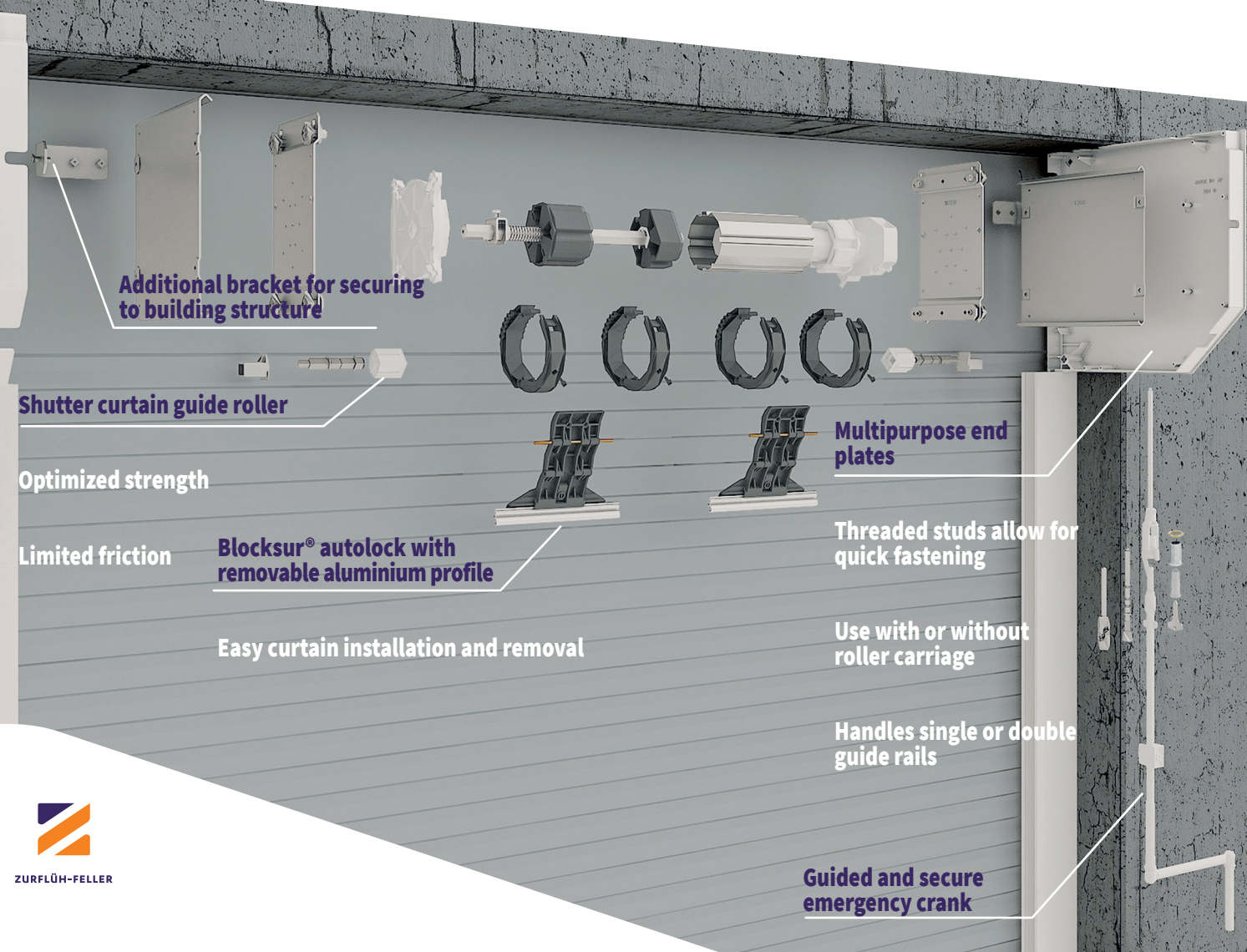
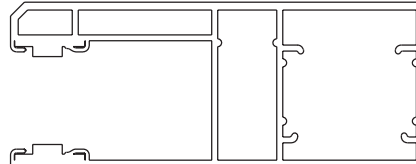
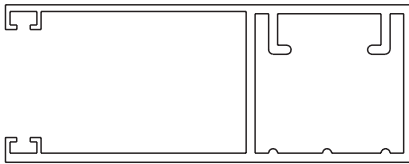
Two versions of end plate for roller carriage:



For single guide rail



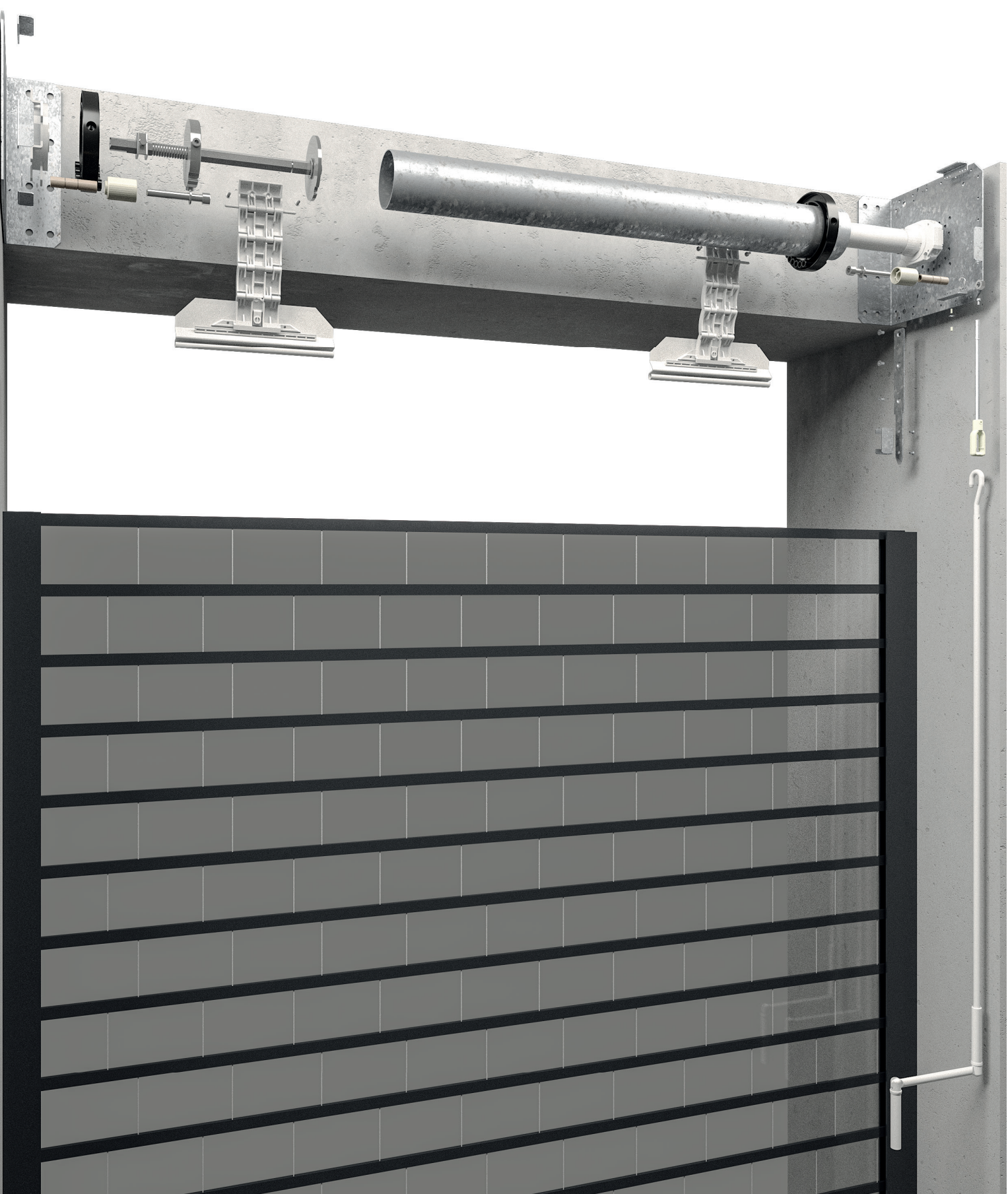
For double guide rail



ZF heavy-duty shutters

Installation made easy:  connect dummy end to tube using **3 x**  type **M8 x 16**

 Ability to handle **2 different winding dia.** with ring used to increase the **tube's dia. from 101.6 to a dia. of 133**

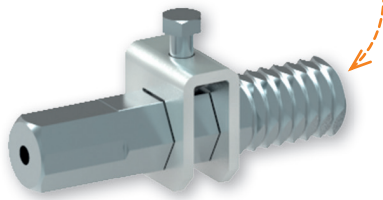


... with the completely adaptable range

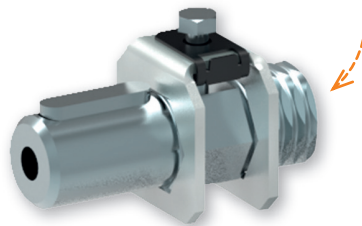
3 adjustable dummy ends that can be fitted to the various safety brake systems...



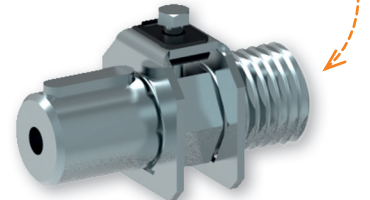
Drive section
18 mm square
for Tubes 101.6 Ø and **133 Ø**



Drive section
Shaft 25 Ø. + Key
for Tubes 101.6 Ø



Drive section
Shaft 30 in dia. + Key
for Tubes 101.6 Ø and **133 Ø**



... and to bearing brackets Ø 25




Tube 101.6 Ø

Definition according to standard **NF** EN 10305-3:

- + Nominal outside diameter: 101.6
- + Thickness 2 mm
- + Galvanized treatment (inside/outside)
- + Weight per metre: approx. 4.8 kg



Winding ring 133 Ø

- + Material: polypropylene
- + Can be held by **1** ×  Item no. 4205



11 Rue des Herbiers
25190 Noirefontaine - France
Tel.: +33 (0)3 81 99 33 00
Fax: +33 (0)3 81 99 33 40
std@zurfluh-feller.com
www.zurfluh-feller.fr